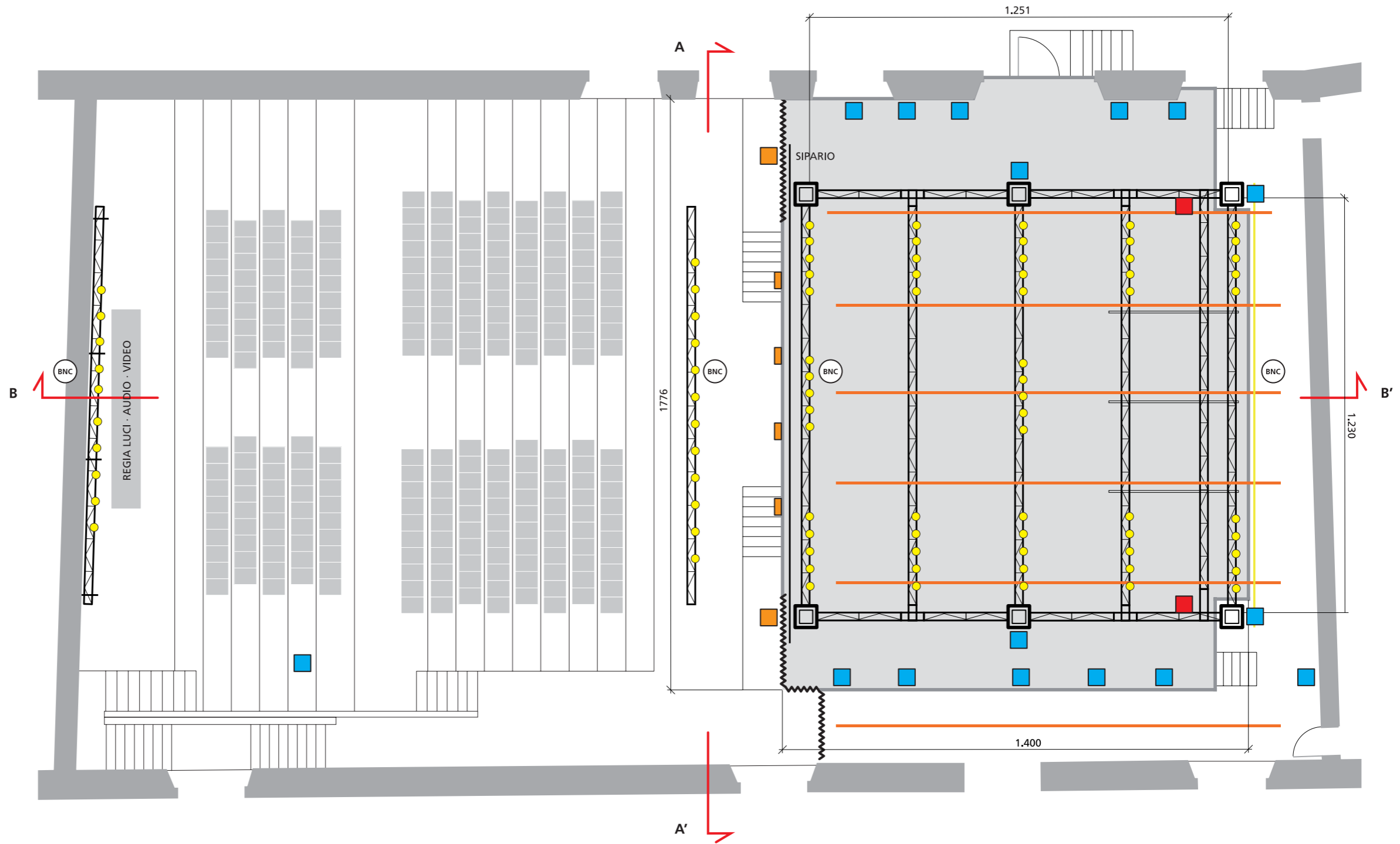
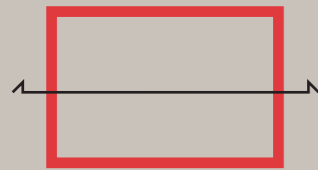


ALLEGATO 4  
PIANTA GENERALE  
Scala 1:100

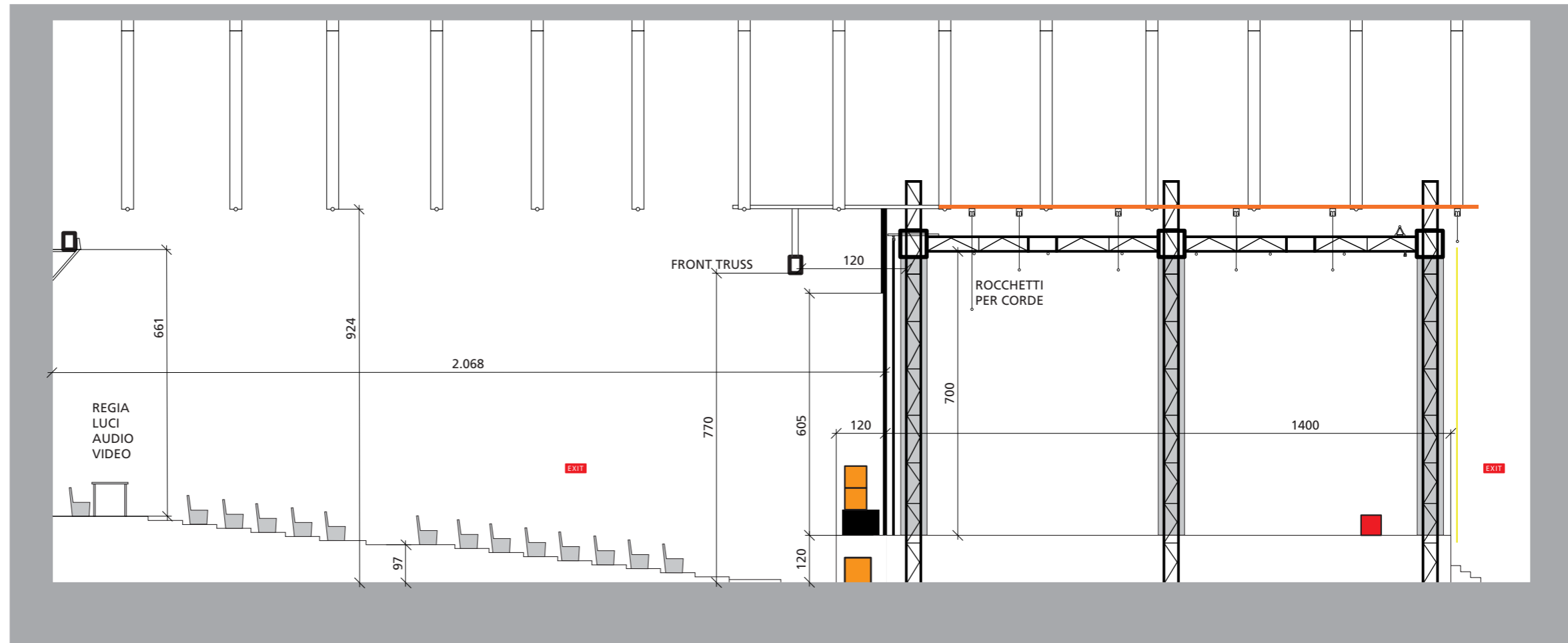
- SISTEMA AUDIO
- CANALI DIMMER A TERRA
- BNC CAVO BNC
- MONITOR PALCO
- CANALI DIMMER SU TRUSS



SEZIONE B-B'  
Scala 1:100

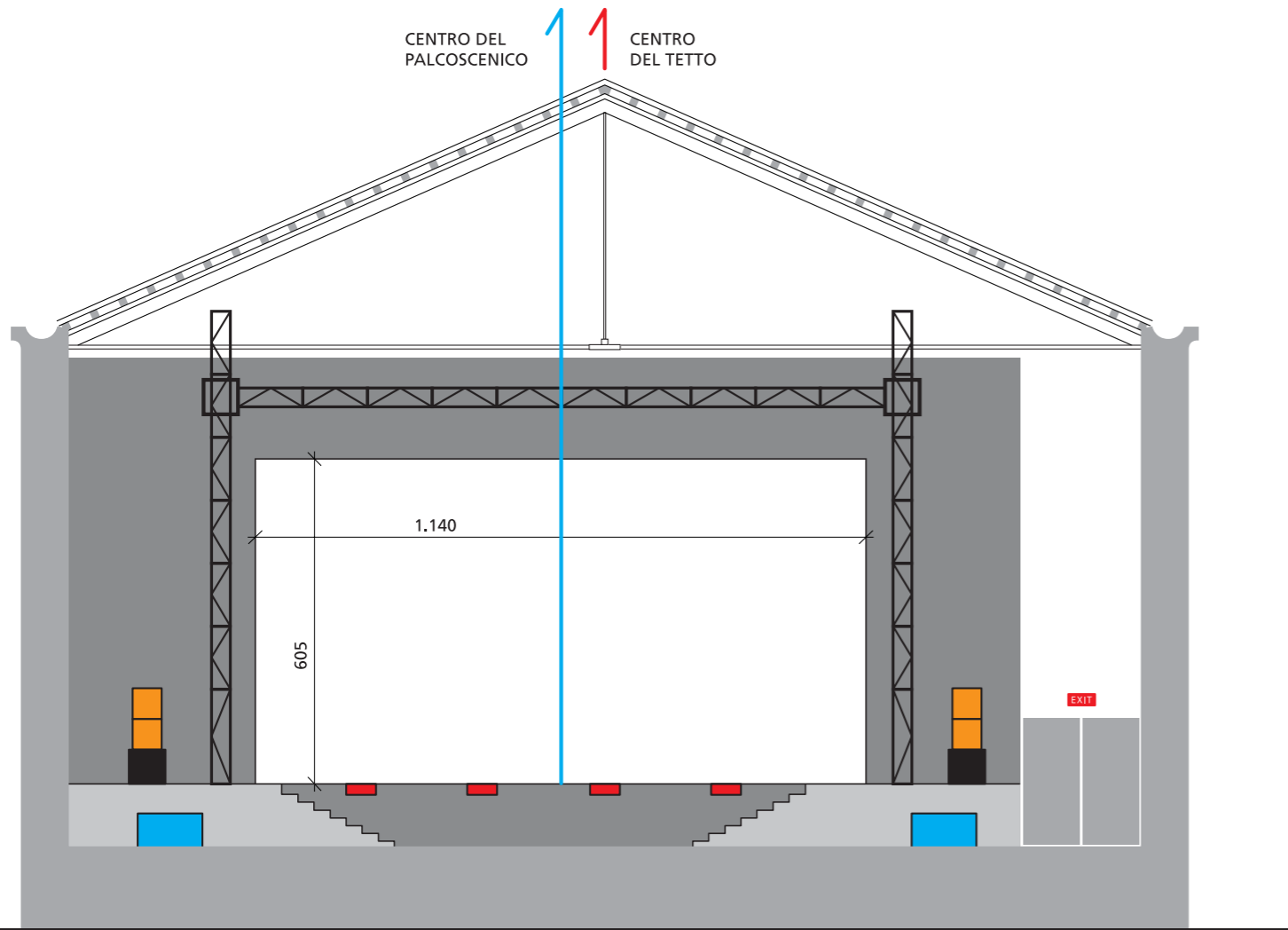


-  SISTEMA AUDIO
-  MONITOR PALCO

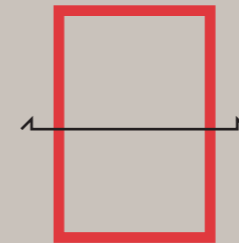


CENTRO DEL  
PALCOSCENICO

CENTRO  
DEL TETTO



**SEZIONE A-A'**  
Scala 1:100



- SISTEMA AUDIO

- MAYER UPA-1P
- SUBMAYER USW-1P
- MAYER UPM-1P